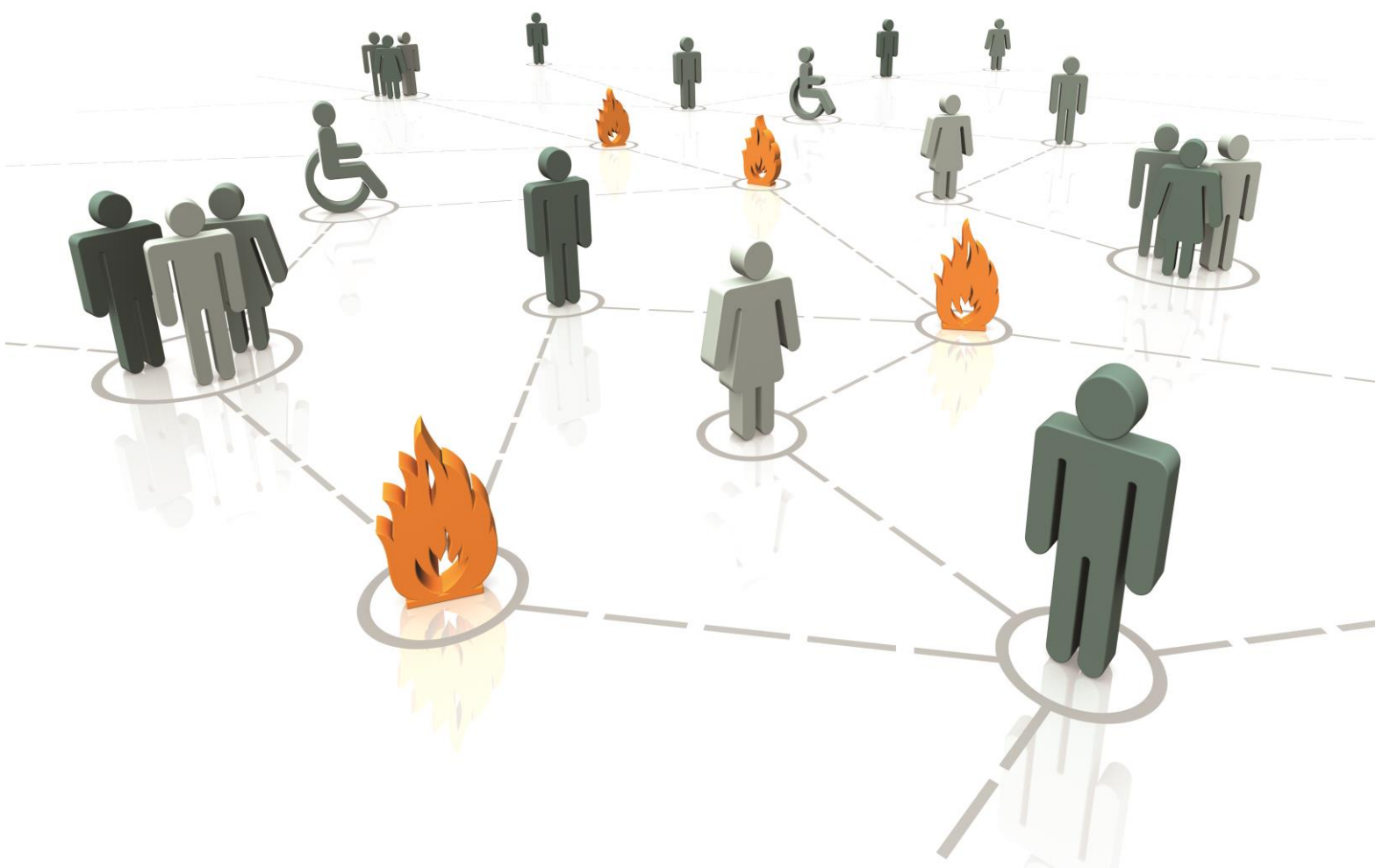


Assessing Sprinkler Systems

Residential systems: BS 9251

Commercial system: BS EN 12845



Contents

1.	Introduction	1
2.	Courses:	
2.1	Assessing residential sprinkler systems: BS 9251	3
2.2	Assessing commercial sprinkler systems: BS EN 12845	4
3.	Open course costs	5
4.	Open Course Venues	6
5.	Company details	7

1. Introduction

This document is designed to help individuals and organisations inform their training decisions by explaining the course options available in assessing existing sprinkler systems or sprinkler system design submissions.

1.1 Target audience

Individuals who assess existing sprinkler systems or sprinkler system design submissions.

1.2 Sprinkler standards

The following sprinkler standards apply to these courses:

- a) Residential systems: BS 9251, BS EN 16925
- b) Commercial systems: BS EN 12845

1.3 Courses

See Section 2 for more details about the sprinkler assessment courses available.

1.4.1 Entry requirements

Delegates should:

- a) have ability to work at Level 3 or above
- b) be proficient in use of English Language

1.5 Course costs

See Section 3 for more details.

1.6 Open course locations and dates

See Section 4 for location options.

1.7 Open course dates

See website link for [sprinkler courses](#), dates are located on right hand side of each course page

1.8 Booking

Once you have selected the correct [sprinkler course](#), use “Book course” icon on webpage for online booking.

1. Introduction

1.9 Course flowchart

The flowchart below illustrates the progression of activities from start to finish.

Sprinkler system assessors

Building Control, Fire Service, Insurance Companies and Fire Risk Assessors

Assessing residential sprinkler systems

BS 9251 2-day Residential sprinkler system assessors course

Hazard review: Assessing commercial systems

BS EN 12845 2-day Hazard review: Assessing commercial sprinkler systems course

Hazard Review

Assessing commercial sprinkler systems

Hazard review: Assessing commercial systems

BS EN 12845 2-day Hazard review: Assessing commercial sprinkler systems course

1.10 Terms and conditions

Terms and conditions apply. Please follow our website [link](#) for a copy of our Terms and Conditions or contact us on courses@xact.org.uk to request a copy. All orders and bookings made will be subject to our terms and conditions.

2.1 Assessing residential sprinkler systems

2.1 Assessing residential sprinkler systems

Target audience

Sprinkler engineers, fire risk assessors, building control officers, fire service auditors, insurance assessors, sprinkler system assessors and fire safety professionals

Aim

To enable delegates to assess whether a residential sprinkler system complies with requirements of BS 9251.

Core topic areas

On completion, delegates should have an understanding of:

- Legislation and codes of practice
- Category of system
- Discharge densities, number of design heads and supply duration
- Sprinkler head requirements
- Head coverage and positioning
- Pipework and valve arrangements
- Water supply options and requirements
- System design requirements

Delegates will also learn to assess suitability of:

- Compensatory features
- Special circumstances
- Vulnerable persons.

Duration

2 days

Prior learning

Experience in assessing fire safety, an understanding of the advantages of sprinkler systems and their operation is required.

Course assessment

Delegates assess sprinkler system compliance with BS 9251.

2.2 Assessing commercial sprinkler systems

Also referred to as **Hazard Review**, ref BS EN 12845

Target audience

Sprinkler engineers, fire risk assessors, building control officers, Fire Service auditors, insurance assessors, sprinkler system assessors and fire safety professionals.

Aim

To enable delegates to assess whether a commercial sprinkler system complies with requirements of BS EN 12845 and the Sprinkler Rules.

Core topic areas

On completion, delegates should have an understanding of:

- Water supply options
- Hazard classification
- Design principles
- Sprinkler head positioning and spacing
- Pipe sizing and layout
- Principles of hydraulic calculations
- Assessing sprinkler designs

Core Reference Documents

- BS EN 12845: Commercial Sprinkler Systems
- LPC Rules for Automatic Sprinkler Installations

Duration

2 days

Prior learning

Experience in assessing fire safety, an understanding of the advantages of sprinkler systems and their operation is required.

Course assessment

Delegates assess sprinkler system compliance with BS EN 12845 and the Sprinkler Rules.

3. Open course costs

3. Open course costs

Page	Activity	Duration	Open
3	Assessing residential sprinkler systems	2 days	300
4	Assessing commercial sprinkler systems	2 days	310

Notes:

Note 1: Open courses are normally located at conference centre in Banbury Road, Ettington, Stratford-upon-Avon, Warwickshire CV37 7NZ. See Section 4 for venue details.

Costs include teaching facilities, refreshments and lunch during teaching day. Additional charge for bed, breakfast and evening meal – see below.

Overnight accommodation with en-suite facilities is available at £79 for bed, breakfast and evening meal. **Note** Sunday night rate is £60 because it does not include an evening meal. Individuals can purchase meals from the restaurant if required.

Note 2: VAT will be added at the current rate.

Note 3: Payment terms: Invoices must be paid in advance of commencement of activity.

Note 4: In-house course options are also available on request.

4. Open course venues

4. Open course venues

Ettington Chase Conference Centre

Reception: 01789 740000

Banbury Road, Ettington, Stratford-upon-Avon, Warwickshire CV37 7NZ

Free on-site parking

Booking enquiries: Xact Training

01386 277980 courses@xact.org.uk



Each venues includes

Restaurant and cafeteria

Large screen TV in common area

Gym offering a range of cardiovascular and weight machines

A range of walks

Lounge and bar areas

Bedrooms:

Ensuite bathroom

Multi-channel TV

Free Wi-Fi

Tea/Coffee and Biscuits

Study desk

Hairdryer

Note: More venue details are provided on our website and in Joining Instructions.

5. Company details

5. Xact Consultancy and Training Limited

Company Registration No: 05295715
VAT Registration No: 855 4570 04
Web site: www.xact.org.uk
Email: info@xact.org.uk

Insurance

Xact are insured for:

Public and Employers Liability
Professional Indemnity

Office

Telephone: 01386 277980
Fax: 0845 0941 887
Address: 3 Abbey Lane Court
Evesham
Worcestershire
WR11 4BY

Contact

Trevor Norwood: 01386 277980
Email: courses@xact.org.uk